

NL1 Integra

ASSEMBLY INSTRUCTIONS

V1.0



INTELLIGENT LOCKING SYSTEMS

1. NEXO NL1 LOCK INSTALLATION AND ASSEMBLY.....	2
1.1 GENERAL WARNINGS	2
1.1.1 Regulatory information USA	2
1.1.2 Class B device notice	2
1.1.3 RF exposure safety	3
1.1.4 TECHNICAL SUPPORT	3
1.2 Lock directions	3
1.3 Assembly considerations	4
1.3.1 Ojmar striking plate	4
1.3.2 Assembly with Magnetic Catch Latch	4
1.4 Procedure for assembling	5
2 PROCEDURE TO UNMOUNT THE LOCK.....	8
3 BATTERY REPLACEMENT	10
4 CLEANING.....	11

1. NEXO NL1 LOCK INSTALLATION AND ASSEMBLY

The NEXO NL(X)1 Faceless lock can be installed on doors with thicknesses between 9 mm and 20 mm.

The assembly of the lock in the locker door must be correctly carried out to ensure the correct operation of the lock.

The positioning of the holes, the distance of the lock on the locker body and the distance of the lock to the striking plate, is shown in designs 1.2, must be correctly measured to prevent any subsequent problems when locking.

1.1 GENERAL WARNINGS

Please follow the rules below to ensure the correct working order of our product in your facility:

WARNING: The product purchased must be installed and used according to the technical operating conditions described in the corresponding manual.

WARNING: Where not specifically indicated, customers are responsible for the appropriate installation or use of the application.

WARNING: On receiving the material, please inspect the packaging and the material for any signs of damage. Also check that the shipment is complete (accessories, documents, etc.).

WARNING: If the packaging has been damaged during transport or you suspect that it may have been damaged or that it could be faulty, the material must not be used. Please contact us in this case.

WARNING: Our products must be installed and handled by authorised personnel. More specifically, the electrical connections must be made by qualified specialists.

WARNING: It is forbidden to make any replacements or remove the protective covers.

WARNING: Do not attempt to repair any material in the event of a fault or damage and then re-start it. You must contact us in these cases.

WARNING: No responsibility will be accepted for damage caused as a result of misuse.

WARNING: In accordance with Royal Decree 106/2008, dated 1 February 2016, before leaving the devices in their pick-up installations, the batteries must be removed and left separately for their appropriate handling.



1.1.1 REGULATORY INFORMATION USA

Changes or modifications not expressly approved by the party responsible for compliance could void the user's authority to operate the equipment.

This device complies with part 15 of the FCC Rules. Operation is subject to the following two conditions: (1) This device may not cause harmful interference, and (2) this device must accept any interference received, including interference that may cause undesired operation.

1.1.2 CLASS B DEVICE NOTICE

Note: This equipment has been tested and found to comply with the limits for a Class B digital device, pursuant to part 15 of the FCC Rules. These limits are designed to provide reasonable protection against harmful interference in a residential installation.

This equipment generates uses and can radiate radio frequency energy and, if not installed and used in accordance with the instructions, may cause harmful interference to radio communications. However, there is no guarantee that interference will not occur in a particular installation.

If this equipment does cause harmful interference to radio or television reception, which can be determined by turning the equipment off and on, the user is encouraged to try to correct the interference by one or more of the following measures:

- Reorient or relocate the receiving antenna.
- Increase the separation between the equipment and receiver.
- Connect the equipment into an outlet on a circuit different from that to which the receiver is connected.
- Consult the dealer or an experienced radio/TV technician for help.

1.1.3 RF EXPOSURE SAFETY

This product is a radio transmitter and receiver. The antenna must be installed and operated with minimum distance of 20 cm between the radiator and your body.

It is designed not to exceed the emission limits for exposure to radio frequency (RF) energy set by the Federal Communications Commission.

This transmitter must not be co-located or operating in conjunction with any other antenna or transmitter.

1.1.4 TECHNICAL SUPPORT

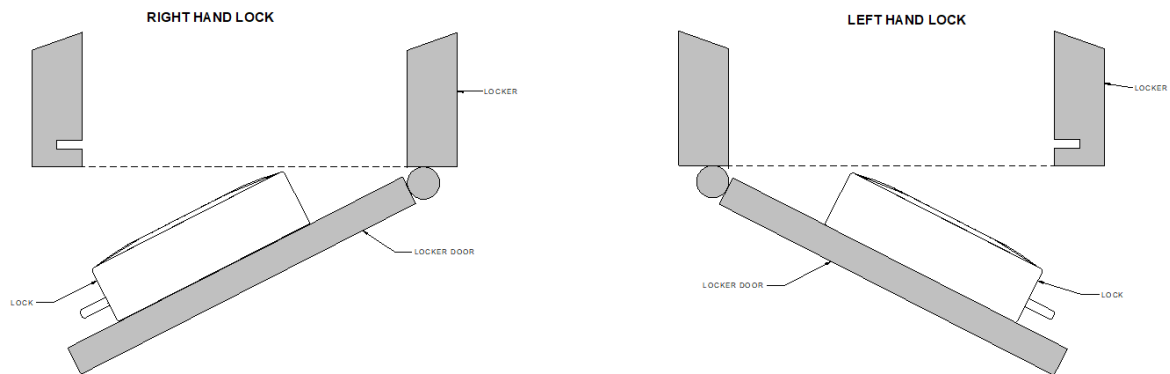
Should you wish to make any enquiries on our products, please contact the Ojmar technical department:

- Telephone: +34 943 748 484
- Fax: +34 943 748 490
- Website: www.ojmar.com

1.2 LOCK DIRECTIONS

Lock installation must be carried out with screws in four drilled holes.

Lock assembly depending on if it is right handed or left handed is as follows.



Design 1.1 - Diagram of right and left locks

1.3 ASSEMBLY CONSIDERATIONS

NEXO NLX(1) faceless lock is fixed to the locker door with four screws.

- Recommended screws:

- o Conglomerate doors: Pan head wood screw 4.5 x 35 DIN 7996 stainless steel (depending on the thickness of the door)

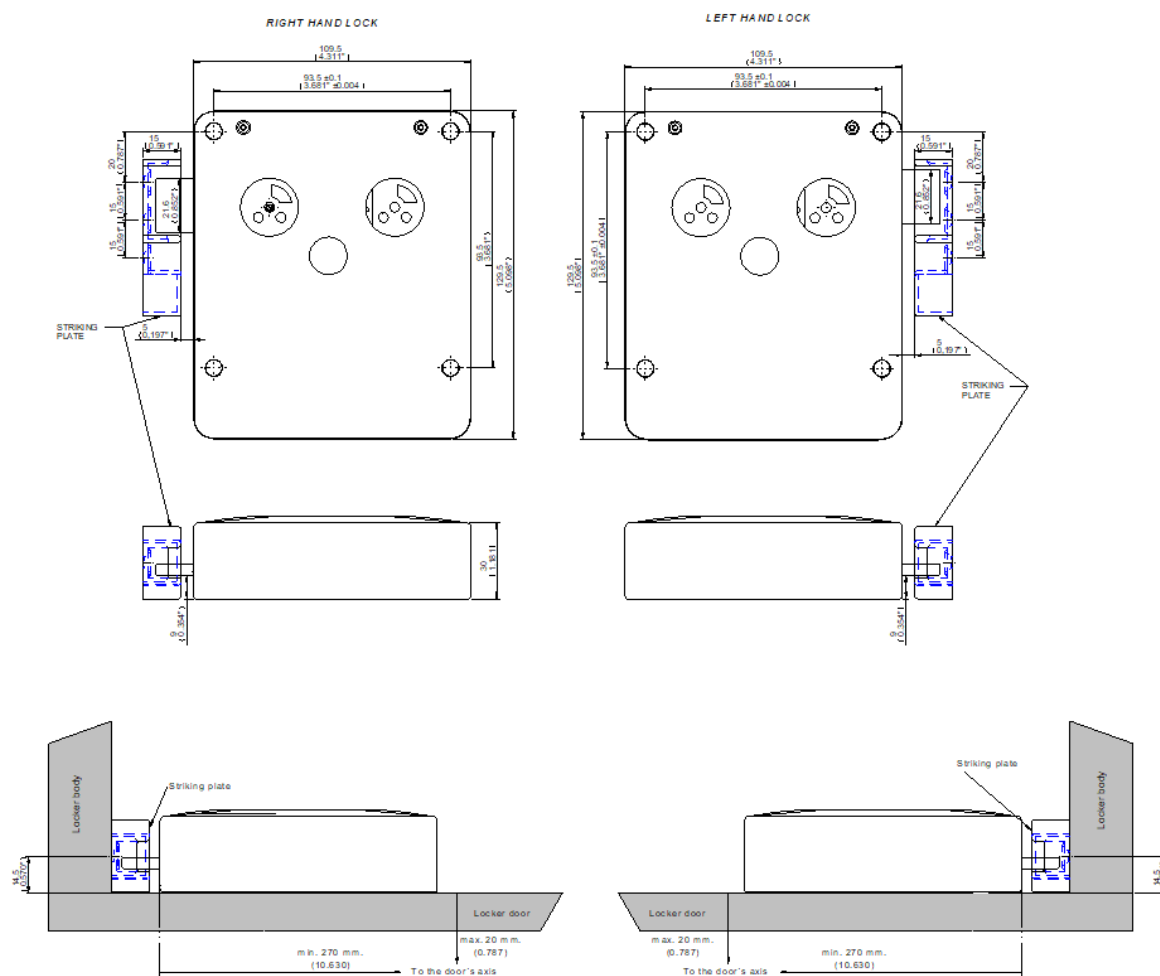
- o Phenolic doors: Pan head screw M5 x 25 DIN 7985 stainless steel (depending on the thickness of the door)

- The maximum tightening torque to apply to the tightening of each screw will be 150 Ncm.

During installation, ensure that the lock does not collide with the locker body with the door open (see design 1.2).

The dimensions and location of the anchorage points are shown in the following designs:

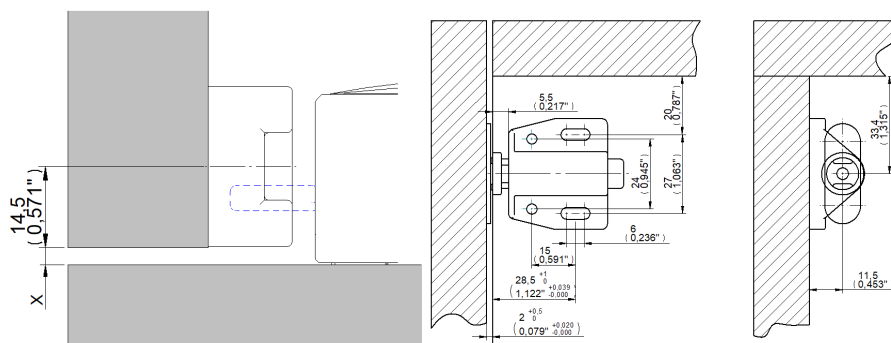
1.3.1 Ojmar striking plate



Design 1.2 - Measurements given in mm (inches)

1.3.2 Assembly with Magnetic Catch Latch

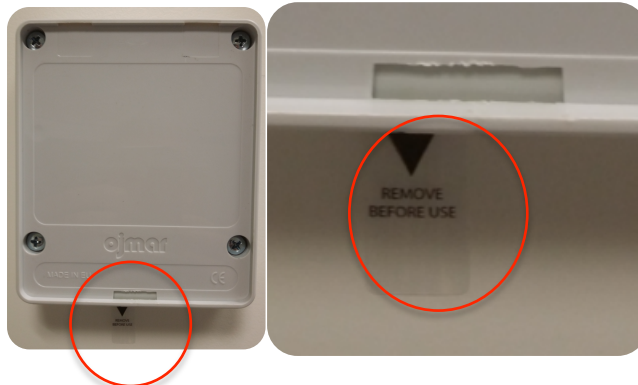
In case of mounting the magnetic Catch Latch, it is necessary to leave a gap "X" of 2/3 mm. between the door and the locker (see following drawing).



1.4 PROCEDURE FOR ASSEMBLING

The procedure for assembling a NEXO NL1 lock on a support or furnishing should be performed in this order:

1. Mark the holes as shown in designs 1.2 and 1.3.
2. If necessary, drill the holes to fasten the lock.
3. Screw the lock with four fixing screws. Ensure that the plastic strip is visible after fixing the lock.



4. Mount the rear cover:
 - a. Insert the two tabs on the cover into the upper part of the lock.



- b. Press the lower part of the cover to snap the cover into the lock.



5. Remove plastic strip from the bottom side of the lock



6. Fastening the striking plate onto the side of the locker (see measurements in designs 1.2.). Lock is not supplied with striking plate, so that, customer can assembly any striking plate. Checking the correct position of the locking device:
 - a. Once the striking plate has been tightened, check that the lock can be opened and closed correctly with an user card. Once the locker door is closed, check that it is correctly closed trying to open it.

After assembling the lock, it is needed to mount an adhesive on the front side of the door. This adhesive is needed because

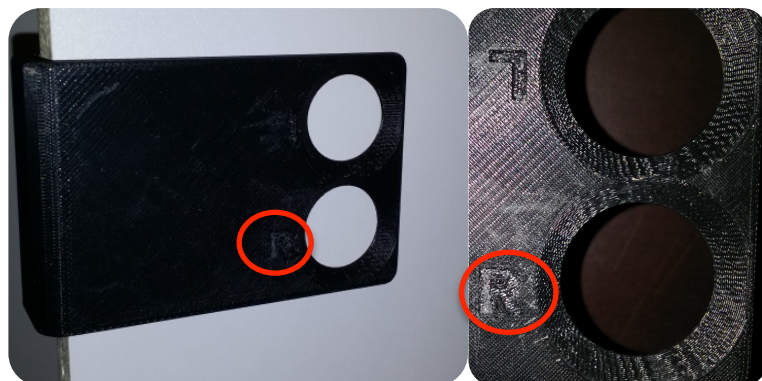
the door is faceless and the user needs to know where to place the RFID card to open or close the door. There is two options, depending if Ojmar supplies the adhesive or customer put its own adhesive:

1. Ojmar Adhesive

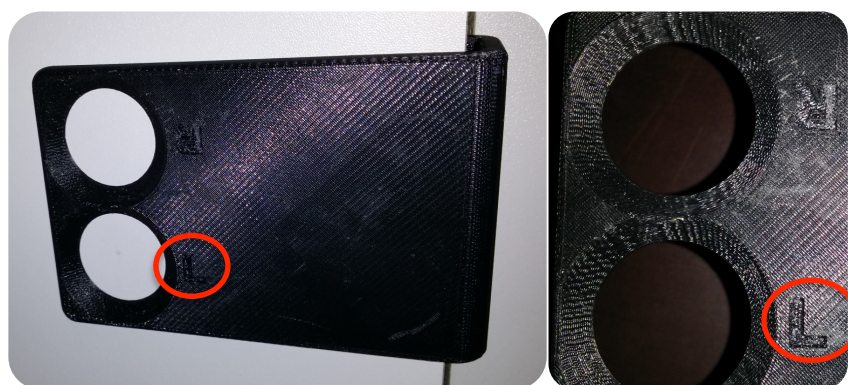
1.1 Clean the surface of the door and make sure that it is dry.

1.2 Fit assembly tooling on the lock as shown in next pictures taking into account the hand of the locker:

Right hand



Left hand



OK

NOK

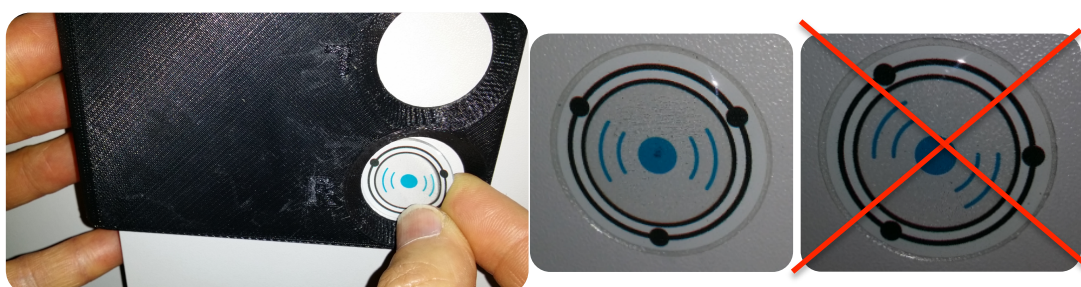


1.3 Remove Ojmar adhesive from paper sheet

1.4 Insert the adhesive inside assembly tooling hole (R= Right hand lock, L= Left hand lock) and press the adhesive firmly so that it is correctly attached on the door. Correct position of adhesive is shown in picture below.

OK

NOK



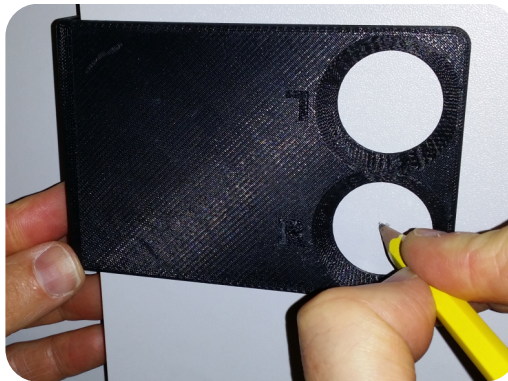
1.5 Remove assembly tooling.

2. Customer Adhesive

Adhesive can not be made in metallic material to avoid any malfunction.

2.1 Make steps 1.1 and 1.2 of previous section

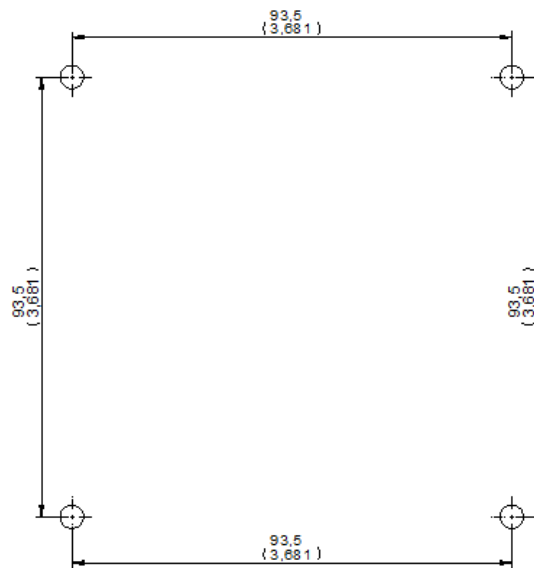
2.2 Mark with a pencil in the center of the hole



2.3 Remove the assembly tooling

2.4 Stick the adhesive on the door, making it coincide with the mark made in point 2.2

MOUNTING HOLES FOR RIGHT AND LEFT HAND LOCK

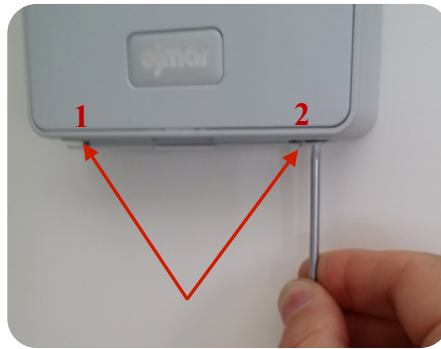


Design 1.3 - Measurements given in mm (inches)

2 PROCEDURE TO UNMOUNT THE LOCK

The steps to follow to disassemble a NEXO NL1 lock on a support or furnishing should be followed in this order:

1. Loosen the two screws on the battery holder using the key provided by Ojmar.



2. Remove the battery holder.



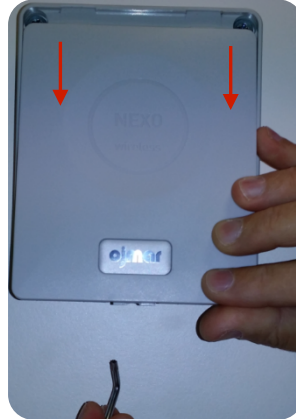
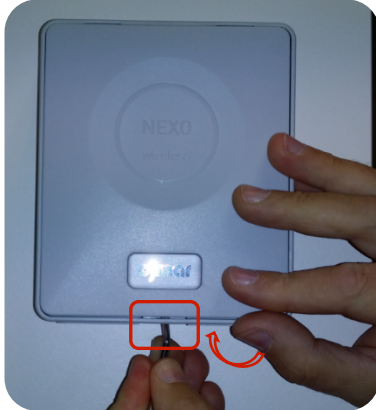
3. Remove the cover. To do this, with the flat side of the key supplied by Ojmar, push the clip of the cover upwards that is on the gap on the battery holder.

This clip is located in the central part of the lock.

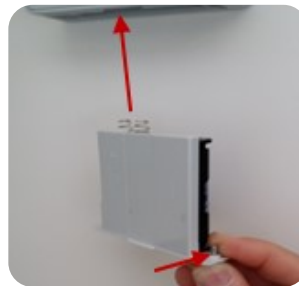
Lower part



4. After unclipping the cover, use the angular area of the key to push the cover and remove it from the lock.



5. Attach the battery holder with the two screws.



6. Loosen the 4 screws of the lock.

3 BATTERY REPLACEMENT

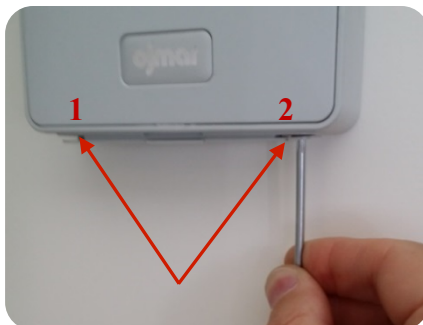


Caution!

• Nb: Explosion risk in case of change to a different type of battery. Move those batteries away according to the instructions given.

The steps to be followed to replace the batteries are as follows:

1. Loosen the two screws on the battery holder using the key provided by Ojmar.



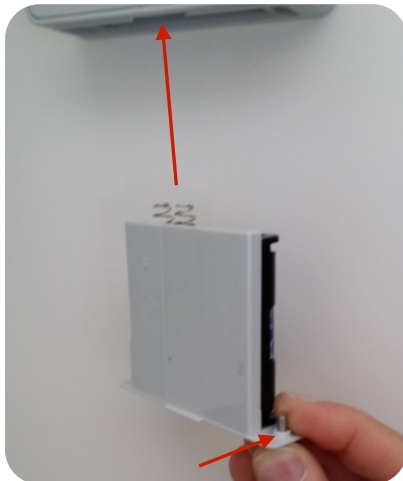
2. Remove the battery holder.



3. Replace the batteries and put the battery holder on again.
The NEXO NL1 lock needs 4 AA batteries.

Battery recommended by Ojmar:

VARTA INDUSTRIAL ALKALINE
1,50 V. SIZE AA LR6.



NB.: The batteries used must be deposited in containers destined exclusively for batteries for their proper management.



4 CLEANING

While the lock has been specially designed and produced for continue use in damp environments, it must adhere to the following guidelines for proper maintenance of the same:

- Clean it with a soft, damp cloth (do not use any detergent product) and then dry it completely.
- Do not submerge it.
- Protect it from water.
- Do not expose it to direct sunlight or extreme temperatures.
- Do not let it fall.
- Do not subject it to strong blows.
- Do not disassemble it.

ATTENTION: In the event of cleaning the installation with water jets, it is necessary for the doors of the installation's lockers to be closed to keep them free of the effect of corrosive substances that accelerate wear.



INTELLIGENT LOCKING SYSTEMS

CONTACT
sales@ojmar.com
+34.943.748.484

OJMAR HQ
Polígono Industrial de Lerun
20870 Elgoibar - SPAIN

OJMAR USA
17155 Von Karman Ave, S111
Irvine CA. 92614 - USA

www.ojmar.com