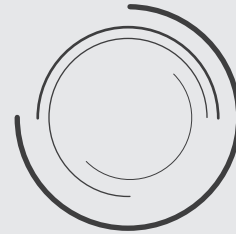


NEXO®NLX1

ASSEMBLY INSTRUCTIONS



INTELLIGENT LOCKING SYSTEMS

NEXO NLX1 LOCK INSTALLATION AND ASSEMBLY

The NEXO NLX1 lock can be installed on doors with thicknesses between 9 mm and 20 mm.

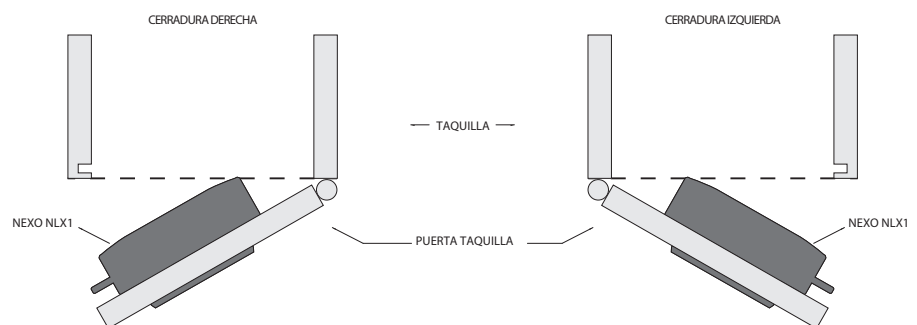
The assembly of the lock in the locker door must be correctly carried out to ensure the correct operation of the lock.

The positioning of the holes, the distance of the lock on the locker body and the distance of the lock to the locking device, as shown in designs 1.2 and 1.3, must be correctly measured to prevent any subsequent problems when locking.

LOCK DIRECTION

Lock installation must be carried out with screws in four drilled holes.

Lock assembly depending on if it is right handed or left handed is as follows.



1.2 ASSEMBLY INSTRUCTIONS

The NEXO NLX1 lock is attached to the locker door with four screws.

- Recommended screws:
 - Conglomerate doors: Pan head wood screw 4.5 x 35 DIN 7996 stainless steel (depending on the thickness of the door)
 - Phenolic or metal doors: Pan head screw M5 x 25 DIN 7985 stainless steel (depending on the thickness of the door)
- The maximum tightening torque to apply to the tightening of each screw or coach nut will be 200 Ncm.
- The diameter of the central hole should be 23 mm (+1/0 mm). Beveling the hole on the inner area of the door is recommended.

During installation, ensure that the lock does not collide with the locker body with the door open (see design 1.2).

The dimensions and location of the anchorage points are shown in the following designs (the dimensions depend on the design of the lock and the type of lock used with the locking device):

- Striking plate with reinforcement

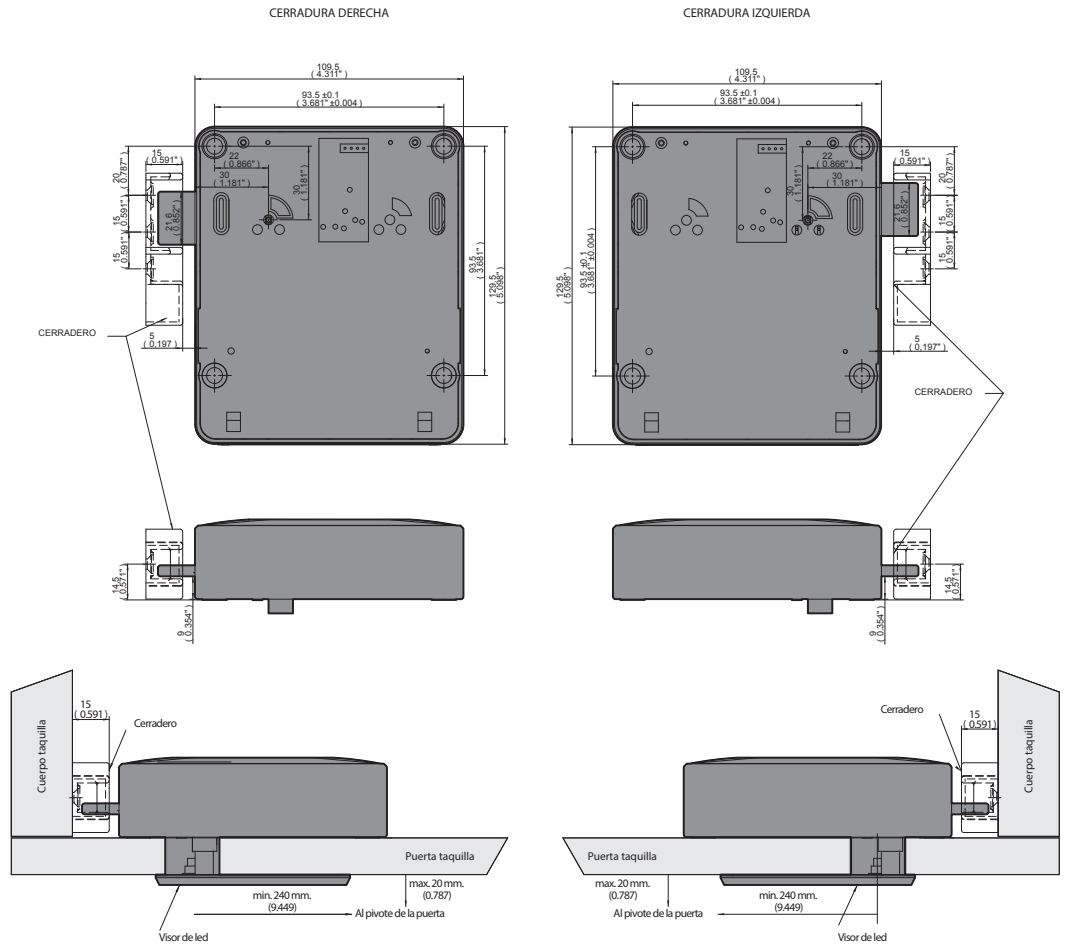
Design 1.2 - Measurements given in mm (inches)

- Flat Striking plate with channel on the locker body

Design 1.3 - Measurements given in mm (inches)

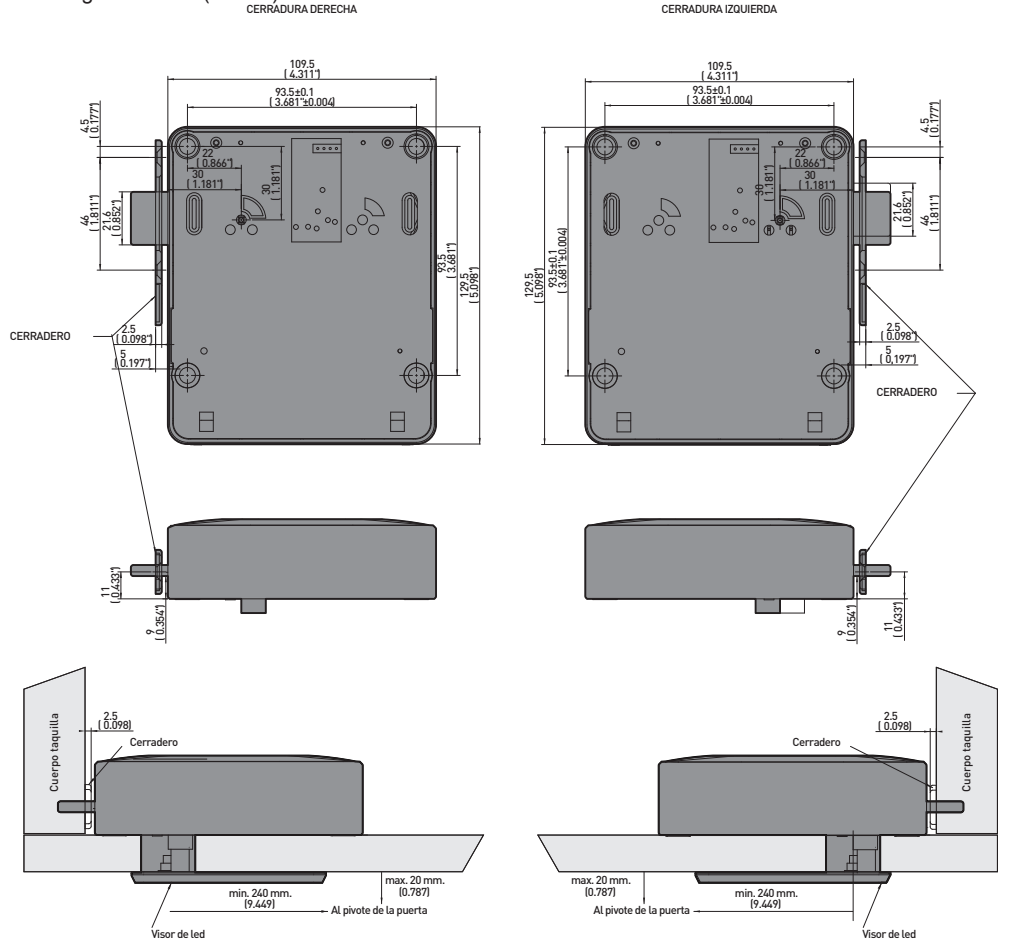
1.2 Design

Measurements given in mm (inches)



1.3 Design

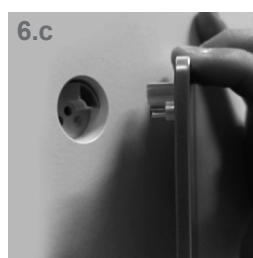
Measurements given in mm (inches)



1.3 PROCEDURE FOR ASSEMBLY

The procedure for assembling a NEXO NLX1 lock on a support or furnishing should be performed in this order:

1. Mark the holes as shown in designs 1.2 and 1.3
2. Drill the central hole with a diameter of $\varnothing 23(+0.1/0)$.
3. If necessary, drill the holes to fasten the lock.
4. Screw the lock with four fixing screws.
5. Mount the rear cover:
 - a. Insert the two tabs on the cover into the upper part of the lock.
 - b. Press the lower part of the cover to snap the cover into the lock.
6. Assembly of the front part:
 - a. Clean the surface of the door and make sure that it is dry.
 - b. Remove the plastic film on the front part.
 - c. Insert the flange of the front part into the flange hole in the lock and make sure that the front part is in line with the locker door.
 - d. Press the front part firmly so that it is correctly attached on the door.
 - e. Remove the protective film from the front part.
7. Remove plastic strip from the bottom side of the lock.
8. Fastening the locking device onto the side of the locker. Depending on the locking device to be used, check the measurements shown in designs 1.2 and 1.3. Checking the correct position of the locking device:
 - a. Once the locking device has been tightened, check that the lock can be opened and closed correctly with a user card. Once the locker door is closed, check that the mechanical lock error alarm is not triggered.

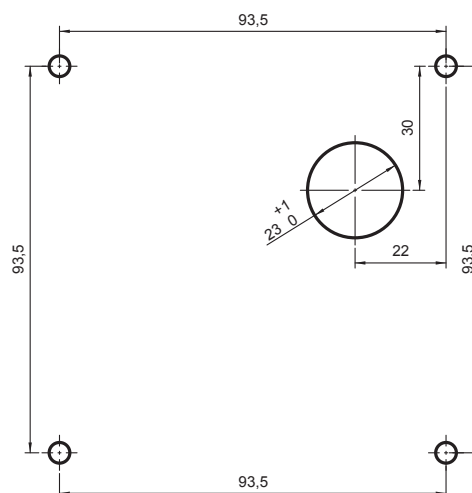
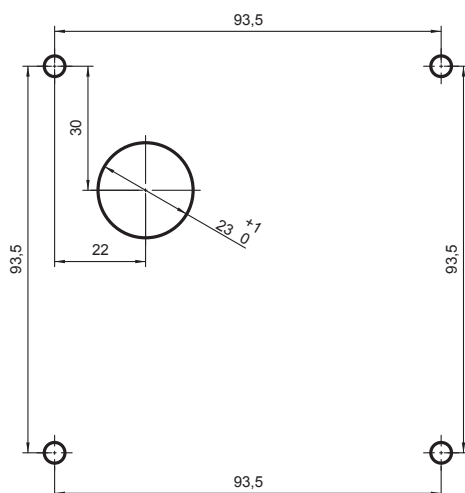


1.4 PROCEDURE TO UNMOUNT THE LOCK

To unmount the lock from the locker door see NEXO NLX1 system manual.

1.4 Design

Measurements given in mm (inches)





INTELLIGENT LOCKING SYSTEMS

CONTACT
sales@ojmar.com
+34.943.748.484

OJMAR HQ
Polígono Industrial de Lerun
20870 Elgoibar - SPAIN

OJMAR USA
17155 Von Karman Ave, S111
Irvine CA. 92614 - USA

www.ojmar.com