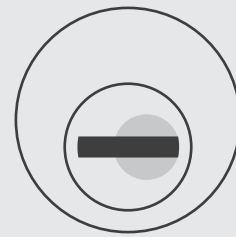


CAM[®]LOCK

ASSEMBLY INSTRUCTIONS



CAM®LOCK

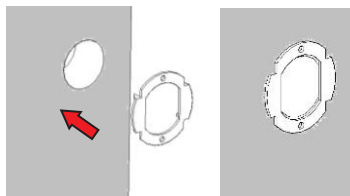
INSTRUCTIONS FOR ASSEMBLING THE CAM LOCK ON A DOOR (RIGHT DOOR)

INSTRUCTIONS FOR ASSEMBLING THE CAM LOCK ON A DOOR (RIGHT DOOR)

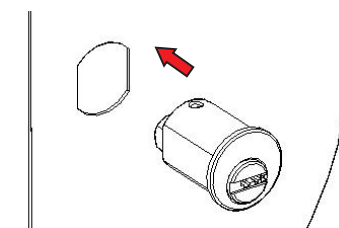
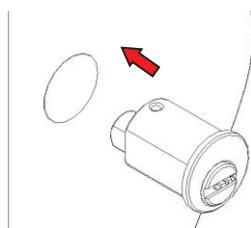
WOOD DOORS

METAL DOORS

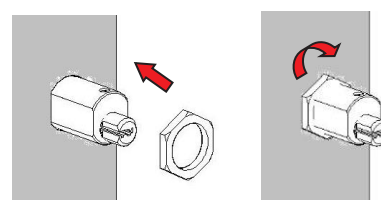
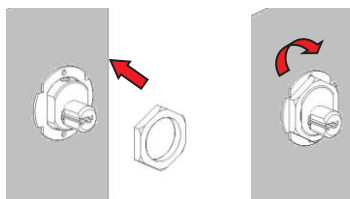
1. Insert the anti-rotation washer into the hole in the wood door at the rear.



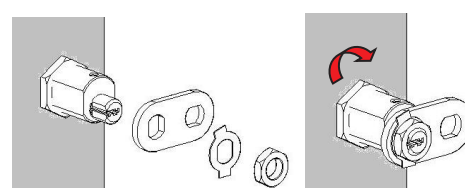
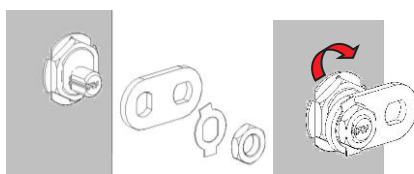
2. Insert the lock in the hole in the door, on the front.



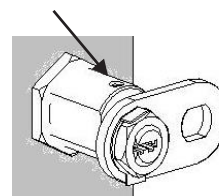
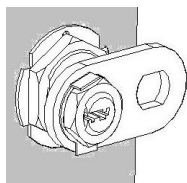
3. Attach the lock to the door attaching the nut to the lock, from the back of the door.



4. Afterwards, insert the cam, the anti-rotation washer and tighten it with the nut. Tightening torque 50 dN.m



5. Finally, bend one of the fins of the anti-rotation washer.





INTELLIGENT LOCKING SYSTEMS

CONTACT
sales@ojmar.com
+34.943.748.484

OJMAR HQ
Polígono Industrial de Lerun
20870 Elgoibar - SPAIN

OJMAR USA
17155 Von Karman Ave, S111
Irvine CA. 92614 - USA

www.ojmar.com